



MapInfo Professional 10.5 Evaluation Install Guide

Table of Contents

- ◆ What is a MapInfo Professional Evaluation Version? 1
- ◆ Installing an Evaluation Version on Your Computer 1
- ◆ Activating your License from an Evaluation Version 2

United States:
Phone: 518.285.6000
Fax: 518.285.6070
Sales: 800.327.8627
Government Sales: 800.619.2333
Technical Support: 518.285.7283
Technical Support Fax: 518.285.6080
pbinsight.com

Canada:
Phone: 416.594.5200
Fax: 416.594.5201
Sales: 800.268.3282
Technical Support: 518.285.7283
Technical Support Fax: 518.285.6080
pbinsight.ca

Europe/United Kingdom:
Phone: +44.1753.848.200
Fax: +44.1753.621.140
Technical Support: +44.1753.848.229
pbinsight.co.uk

Asia Pacific/Australia:
Phone: +61.2.9437.6255
Fax: +61.2.9439.1773
Technical Support: 1.800.648.899
pbinsight.com.au

©2010 Pitney Bowes Software Inc. All rights reserved. MapInfo, Group 1 Software, and MapInfo Professional are trademarks of Pitney Bowes Software Inc. All other marks and trademarks are property of their respective holders.

May 12, 2010

What is a MapInfo Professional Evaluation Version?

Installing an evaluation version allows you unlimited use license of MapInfo Professional for a thirty (30) day courtesy period.

If you have registered for Site Pass on the MapInfo web site, you can review a list of MapInfo Professional features:

<http://www.pbinsight.com/professional>

Then, select **Software > MapInfo Professional > Features**.

IMPORTANT:

- **There is only one courtesy period for MapInfo Professional.** If you complete your courtesy period while using the evaluation version, you do not get another one when you reinstall another evaluation version.
- **You do not get another courtesy period when you purchase MapInfo Professional.** If your courtesy period has expired during your evaluation, you must activate your new MapInfo Professional license immediately.
- You cannot use a **MapInfo Professional 10.5 evaluation license with an older version** of MapInfo Professional. If you purchased MapInfo Professional 10.5, then install it from the DVD in the box before activating. For activation instructions, see the *Install Guide* (MapInfoProfessionalInstallGuide.pdf on the install DVD).

Installing an Evaluation Version on Your Computer

We assume that, if you are reading this, you have already downloaded the Evaluation version file from the web site.

To install your evaluation version of MapInfo Professional:

1. Go to the directory into which you placed your evaluation version and double click **Setup.exe**. The wizard begins to lead you through the installation process.
2. Click **Next** to display the License Information dialog box and click **I accept**. Click **Next** to continue. The Customer Information screen displays.

3. Type in your user and organization names in the fields provided and select the **Check here if you are installing an evaluation copy** check box. Click **Next** to display the Setup Type dialog box.
4. Choose one of the following to install all of the product files or to specify the type of files to be installed:
 - **Typical Workstation installation (Recommended)**

Click this option to install all of the MapInfo Professional files on your computer. We recommend this so that you get the most out of your evaluation of the product.

After you select this option, click **Next**. The Destination folder displays allowing you to change the directory for the installation. When you have completed this, click **Next** to and go to **step 5**.
 - **Custom Workstation installation**

Click this option to prevent the installation of individual file types. You might select this option if you have limited space on your destination drive. Click **Next** to display the selection options:


 - MapInfo Program Files (you must install these files to run MapInfo Professional)
 - Documentation (installs user guide documents in PDF format)
 - Tools (installs MapInfo Utilities and Crystal Reports)

 When you select **Typical Workstation installation**, all of these files are installed.

After you decide which features to install, click the **Down Arrow** beside each file type. Select the installation option for each feature from these options:

- This feature will be installed on your local hard drive.
- This feature, and all subfeatures, will be installed on your local hard drive
- This feature will not be available

When you select the first or second options, the feature installs on your destination drive in the default folder. This path displays in the **Install To:** entry below the Custom Setup list pane. To specify another path, select **Change**.

 To prevent a feature from installing, select **This feature will not be available**.

To see if you have enough space on your destination drive, click **Space**. The Disk Space Requirement dialog box displays the disk size, the amount of available space, and the amount of space the selected files would take.

Click **Next** to continue.

5. After you select all the setup and path options, the Ready to Install the Program dialog box displays. Here, consider all of the selections and options you have chosen before you begin the installation. Click **Back** to make changes. When you are ready to begin the installation, click **Install**.
6. At the end of the installation, click **Finish**.

Once you begin using your evaluation version of MapInfo Professional, each time you begin a new session, a dialog box displays to give you the option to activate the product or to continue your evaluation with a courtesy license. You can continue to use the courtesy license for 30 days.

Activating your License from an Evaluation Version

After you purchase MapInfo Professional, you can activate your license to continue using MapInfo Professional. The information you need to activate your license is on the side of the box you receive with the DVD and *User Guide* documentation. We recommend that you find the serial number and access code information before you begin this process and have it with you when you begin the activation. There are three different kinds of licenses but the user activation process is the same.

 Two licenses, the current evaluation and the past activated license, can run side by side without issue.

If you have a concurrent or distributed license, you need to install and run the License Server before you can

activate your software. Check with your system administrator or the person who purchased the product to see if this is necessary. We recommend you follow the instructions on activating your product in the *MapInfo Professional Install Guide* for assistance in this case.

To activate your license:

1. Each time you open the evaluation copy of MapInfo Professional, the Evaluation Copy screen displays prompting you to activate the product or continue the evaluation.

To begin the activation process, click **Activate**. The Enter Licensing Credentials dialog box displays.

MapInfo Professional Activation

Enter Licensing Credentials

To activate MapInfo Professional you must enter the Serial Number and Access Code provided. Please enter the Serial Number and Access Code and click Next to activate MapInfo Professional.

Activation Credentials

Serial Number:

Access Code:

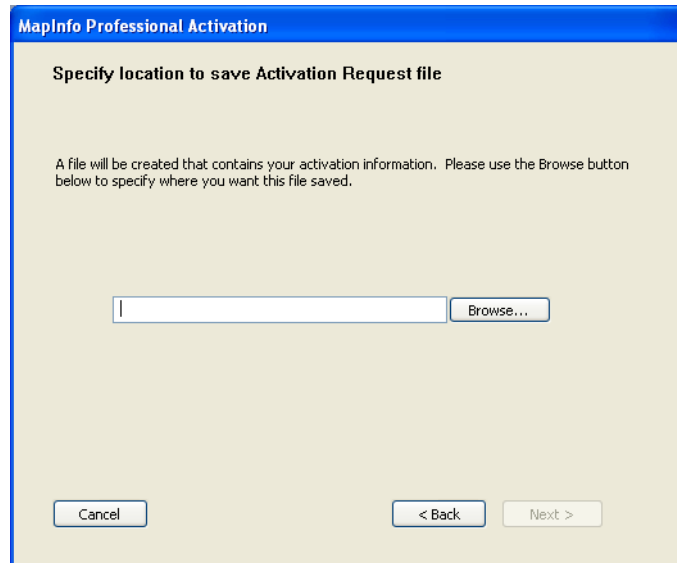
NOTE: The Serial Number and Access Code should have been provided when you converted the evaluation copy of MapInfo Professional into a purchased product. If you do not have the Serial Number and Access Code available, please contact Customer Service at: www.mapinfo.com/customerservice

Cancel < Back Next >

2. Enter the serial number and access code in the fields provided. One of the following occurs:
 - If you did not enter this information correctly the **Next** button does not enable. Check the information you entered and correct any errors you may have made.
 - If you entered this information correctly, the **Next** button enables. Click **Next**.
3. Select one of the following activation methods:
 - **Automatic Activation**– Select this option if you have an Internet connection. The Activation Wizard will make a one-time connection with a MapInfo server. Using the serial number and access code you provided during the installation, the Activation Wizard will retrieve one of the licenses your organization purchased and associate it with your computer.
 - **Email Activation**– Select this option if you do not have an Internet connection. The Activation Wizard will guide you through the creation of an Activation Request file that you must then email to MapInfo.
4. Click **Next**.
 - If you selected **Email Activation**, go to **step 5**.
 - If you selected **Automatic Activation**, the Activation Wizard takes a few moments to transfer the activation credentials to MapInfo and perform the activation. A MapInfo Activation message displays on the screen to tell you that the activation was successful.

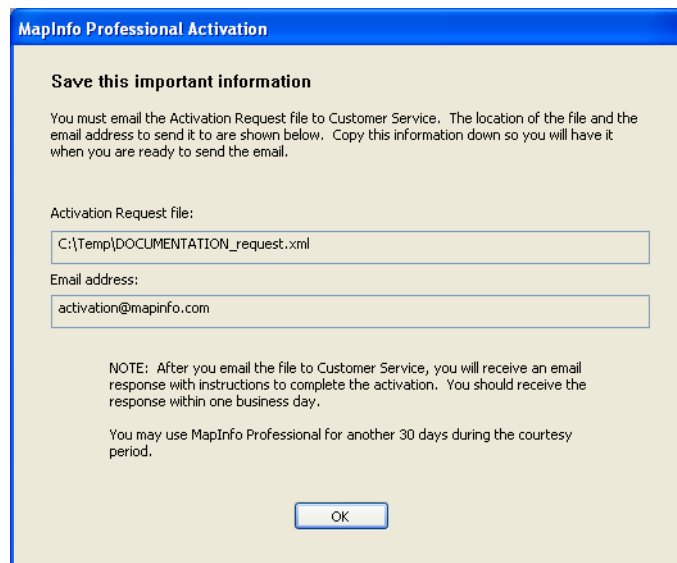
Click **OK**. The Activation Wizard closes and MapInfo Professional your license is activated.

5. If you selected **Email Activation**, the Specify location to save Activation Request file dialog box displays on the screen:



Select a folder in which to save the Activation Request file. Click the **Browse** button to navigate to the desired location. Click **OK**. The path and filename of the Activation Request file appear in the box. The Activation Request contains your serial number and access code, plus information that identifies the computer you are activating on.

6. Click **Next**. The Save this important Information dialog box displays on the screen.



This dialog box provides the information to send your Activation Request file to MapInfo. The full path and filename of the Activation Request file is displayed in the **Activation Request File** box. The email address to send the file, activation@mapinfo.com, is displayed in the **Email address** box.

Take a few moments to write down the location of the Activation Request file and email address to send the Activation Request file.

CAUTION: Please do not edit the Activation Request file in any way. If you do, MapInfo may not be able to process it and your activation will be delayed.

7. Click **OK**. The Activation Wizard closes and the courtesy period automatically starts.

8. Email your Activation Request to MapInfo at this address:

activation@mapinfo.com

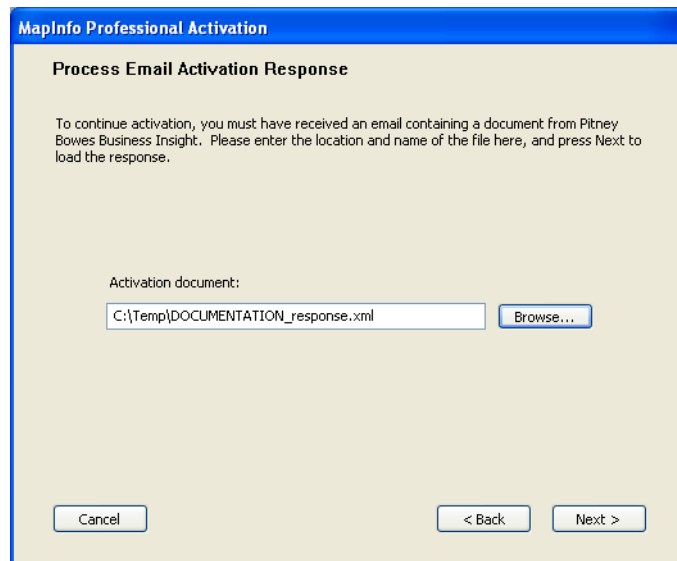
You can finish email activation when you receive an Activation Response file from MapInfo. You should receive the Activation Response file within one business day. See [Using MapInfo Professional While You Wait on page 6](#) for these instructions.

Finishing Email Activation

When you receive the Activation Response file from MapInfo, you are ready to finish activating MapInfo Professional.

To finish email activation:

1. Copy the Activation Response file you received from MapInfo to an accessible folder on your computer and make note of the location.
2. Open MapInfo Professional. If MapInfo Professional is already open, exit and restart the program. A dialog box displays asking you if you want to finish activating MapInfo Professional.
3. Click **Yes**. The Process Email Activation Response dialog box displays on the screen.
4. Click **Browse** to navigate to the location of the Activation Response file. Click **Open** in the Locate Response file dialog box when you have located the file.
5. The path and filename of the Activation Response file appear in the box.



6. Click **Next**.
7. A MapInfo Activation message displays on the screen to tell you that the activation was successful. Click **OK**. The MapInfo Professional Activation Wizard closes, and MapInfo Professional is activated and ready to use. You are finished.

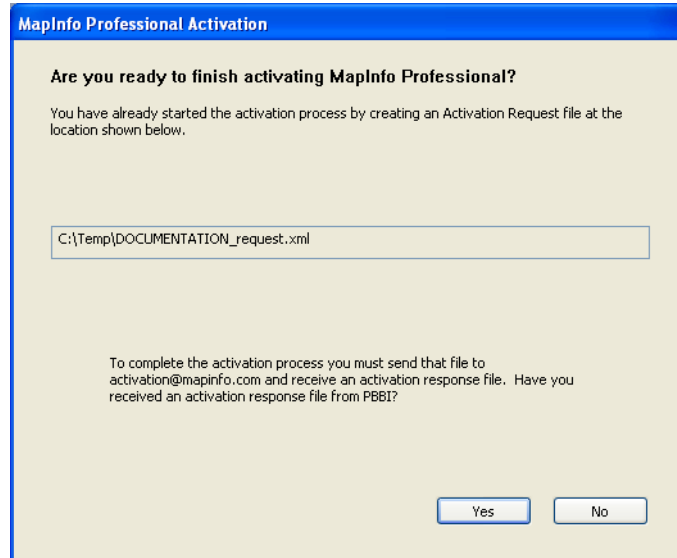
i Once you have seen the confirmation message stating that your product has been activated, you can delete the email response file from your system.

To check the status of your activation, choose **Help > About** and review the contents of this dialog box.

Using MapInfo Professional While You Wait

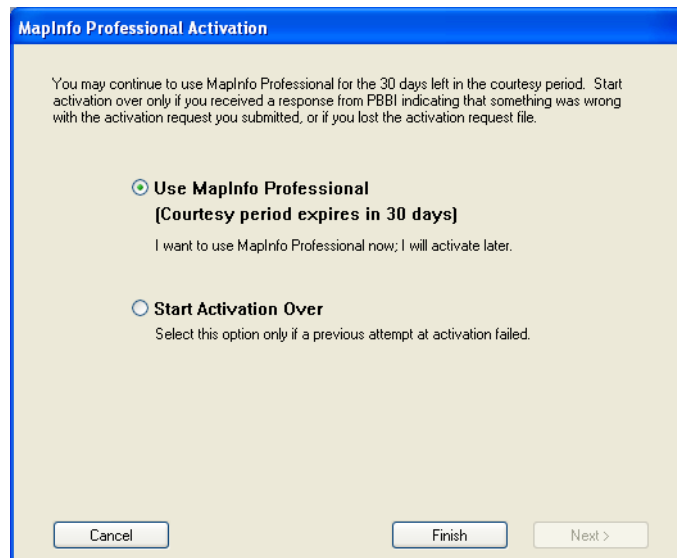
While you are waiting for MapInfo to send you the Activation Response file, you can continue to use MapInfo Professional using the courtesy license. To ensure uninterrupted use of MapInfo Professional, we encourage you to activate before the courtesy period expires.

Each time you open MapInfo Professional subsequent to initiating email activation, a dialog box displays asking if you want to finish activating MapInfo Professional. When you receive the Activation Response file from MapInfo you are ready to finish activation.



To continue using MapInfo Professional during the courtesy period:

1. Click **No** in the dialog box.
2. A dialog box displays on the screen that provides information about the courtesy period and asks you how you would like to proceed.



Select one of the following:

- **Use MapInfo Professional**—Select this option if you have not received an Activation Response file yet and you want to use MapInfo Professional under the courtesy period.
- **Start Activation Over**—Select this option if previous activation attempts have failed.

If you selected **Use MapInfo Professional**, click **Finish**. The Activation Wizard closes and MapInfo Professional is ready to use under the courtesy period. You can finish the activation at a later time.

If an earlier attempt to activate MapInfo Professional failed, and you selected **Start Activation Over**, click **Next**. The Activation Wizard restarts, giving you the opportunity to try the activation again.